

DATA SHEET

Indentation Penetrometer



80-B0163/C

General description

Introduction

The Asphalt Indentometer is one of the most important testing machines for mastic asphalt and rolled asphalt, and it's included in the required test methods for EN 13108-6 CE Marking of mastic asphalt.

The test method is used for determining the depth of indentation of mastic and rolled asphalt, when force is applied via a cylindrical indenter pin with a circular flat-ended base. The maximum nominal size of aggregates in the mix is less or equal to 16mm. The test can be applied both on 70mm approx cubes or Marshall samples (the steel base plate for Marshall samples is included).

Description

The new Controls model incorporates some improved features increasing the user-friendliness and the operability of the machine, like the new weight positioning system, allowing in a very user-friendly and precise method to pass from unload to preload phase, then to load phase without the need to add/remove weights from the structure, the four-columns frame structure, granting a precise weight positioning, the piston position indicator, making easier the adaptation of the penetrometer to different height samples (70mm cubes, Marshall specimens) and the water drain facility at the end of the test.

Main features

- New weight positioning system, allowing in a very user-friendly and precise method to pass from unload to preload phase, then to load phase without the need to add/remove weights from the structure.
- Four-columns frame structure, with high stiffness.
- Piston position indicator, making easier the adaptation of the penetrometer to different height samples.
- Stainless steel water bath included, for sample conditioning.
- Water drain with drainage pipe included in the machine.

Standards

- EN 12697-20

DATA SHEET

Specifications

The asphalt indentation penetrometer is supplied with a stainless steel water bath, 500 N weights, interchangeable piston 1 and 5 cm², 30 x 0.01 mm dial gauge, steel plate with dial gauge holder, calibration cylinder to EN 12697-20, complete with certificate. A range of accessories to create 70 mm mastic asphalt cubes and a water temperature controller are available including the Digital immersion heater-agitator 86-D1408/D to heat water at the testing temperature conforming to Standard (22 or 40 °C). See accessories

Dimensions (wxdxh): 430x530x955 mm (700 mm without weights)

Weight approx.: 115 kg

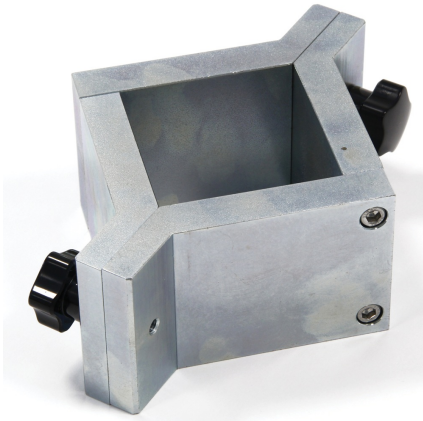


No Load Pre Load (25 N) Load (525 N) Detail of the weight positioning system, allowing to pass from No-Load to Pre-Load phase, then to Poad phase in a very fast, precise and safe way: by rotating the lower part, the load conditions are precisely applied, and the operator doesnâ€™t have to apply or remove the heavy weights from the apparatus.



86-D1408/D Digital immersion heater

DATA SHEET



80-B0163/2 Penetration test moulds 69 mm

Products

80-B0163/C

Asphalt indentation penetrometer, conforming to EN 12697-20

Accessories and consumables

80-B0163/1

Cube mould 70.7 mm

80-B0163/2

Penetration test mould, 69 mm

86-D1408/D

Digital immersion heater-agitator. 230V/50-60Hz/1Ph